

becon GmbH

Hauptstraße 8b
82008 Unterhaching



www.datagerry.com
www.becon.de
www.opencelium.io



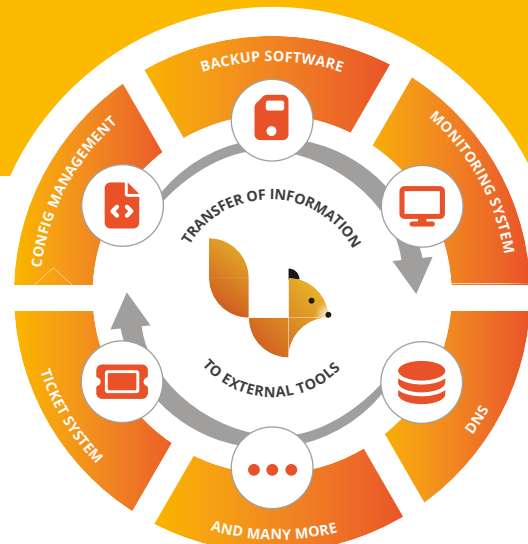
FACT SHEET

The open source CMDB and asset management tool

Automate your IT with DataGerry

Use DataGerry as a powerful and flexible central database to optimize and automate your entire IT environment. With DataGerry, you can store, manage and organize all the important information you need for your business in one central location. Thanks to its robust and versatile features, DataGerry integrates seamlessly with external systems such as DNS servers, ticketing systems, configuration management tools (e.g. Ansible), monitoring systems and many others. Whether you manage a complex IT

infrastructure or operate a smaller environment, DataGerry adapts to your needs and provides a scalable and reliable solution for IT automation. Experience higher productivity, greater data accuracy and seamless integrations with DataGerry.



The most important facts

Define your data model

Every IT environment has its own structure. That is why DataGerry does not have any predefined object types (e.g. router, server, location). With DataGerry, you have the freedom to simply define the data model for yourself.

Automate your IT

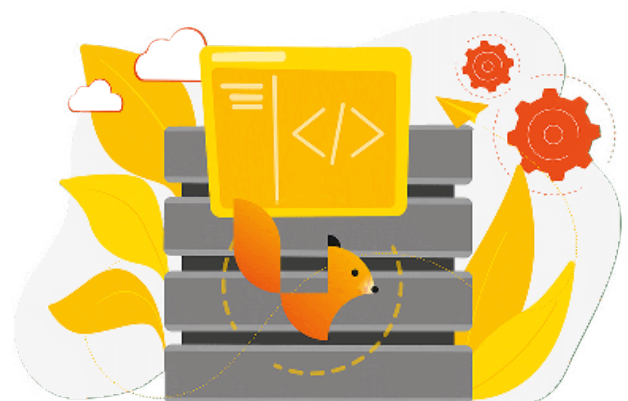
Not only do we want you to store your assets with DataGerry, we also want you to be able to use your data flexibly. Access your data with one of our powerful APIs or trigger an event-driven synchronization with your external tools (such as monitoring, ticket system, config management, etc.). Use DataGerry as a database for the automation of your IT.

Open Source

We love open source software. DataGerry is free and licensed under the AGPLv3. Simply download, copy, use or modify. If you need help, we offer training, consulting, custom development and support contracts with a fair pricing policy. Do not hesitate to contact us.

DataGerry Community-Edition

The Community Edition version of DataGerry offers a flexible and self-managed solution for companies that want full control over their IT infrastructure and data. The Community Edition is based on freely available open source code. With on-premises installation, you retain data sovereignty and can configure your environment to meet internal security and compliance standards. This version is particularly suitable for organizations that require high adaptability and want to integrate or extend their systems individually. Support is available through the open-source community, which provides valuable assistance with a wealth of resources and active exchange.



DataGerry Cloud

The cloud version of DataGerry is based entirely on our freely available open source code, just like the community edition. The big difference: with the cloud version, you benefit from a ready-to-use, professionally operated platform. DataGerry offers a convenient and scalable solution for efficiently managing your IT and business resources. You don't have to worry about servers, installation, updates, security, or operation. All new features and improvements are immediately available in the cloud version. With the cloud version, you can access your data securely from any location, ideal for companies with distributed teams or multiple locations. The reliable cloud environment ensures high availability, fast implementation, and a significant reduction in technical effort.



Functions

Object Management

Object types and instances can be flexibly defined, versioned and managed, supported by a powerful search function.

Webhook Integration

Webhooks enable automated and resource-saving data exchange with external systems in real time.

Multi-Subscription Support

Multiple subscriptions, each with its own database, allow DataGerry to be used for different clients.

REST API

The REST API allows easy integration and use of DataGerry data in external systems.

Reports

With an integrated query builder, individual reports can be created to analyze the stored objects.

File import and export

Object types and data can be imported and exported using formats such as JSON, CSV, XLSX and XML.

Integration of external tools via OpenCelium

OpenCelium enables the flexible and standardized integration of third-party applications for automated data exchange.

...and many more functions on the roadmap

Further exciting functions are being planned and will be developed on a regular basis.



becon GmbH

Hauptstraße 8b
82008 Unterhaching

info@datagerry.com
T.: +49 (0) 89 608668-0

www.becon.de
www.datagerry.com
www.opencelium.io

